



SANCROFT

PATERNOSTER SQUARE

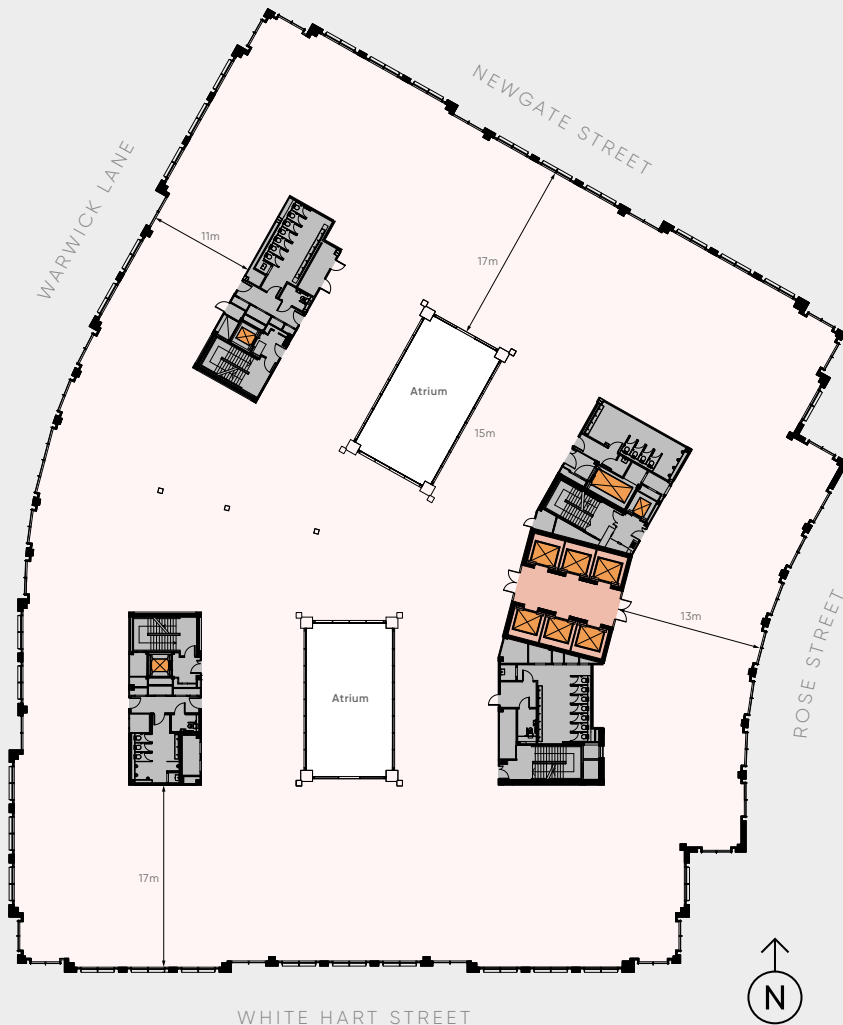
A DESTINATION
BUILDING IN A
WORLD CLASS
LOCATION

sancroft.london

301,518 SQ FT

TOP SPECIFICATION EFFICIENT FLOORPLATES WITH CONTEMPORARY AMENITIES, DESIGNED BY BGY

Typical Floor (41,699 sq ft)



FLOOR	USE	SQ FT
Level 7	Office	13,369
Level 6	Office	37,555
Level 5	Office	39,364
Level 4	Office	41,699
Level 3	Office	41,699
Level 2	Office	44,250
Level 1	Office	38,847
Ground	Office	21,259
Lower Ground	Office	16,501
Basement	Leisure	6,975
Total Net Internal Area		301,518

Note: The above areas are estimated only and will be verified post completion of the works.

- Prime island site location in the City's premier square
- Large roof terrace on level 7 facing St Paul's and terrace on level 6 facing Rose Street
- Ground floor café integrated into the entrance hall
- 4 pipe fan coil air conditioning
- Raised floors: levels 1-2 – 350mm (overall); levels 3-7 – 165mm (overall)
- Floor to ceiling height: levels 1-2 – 3.2m; levels 3-6 – 2.75m
- 6 x 21 passenger lifts, 1 x goods lift (2,000kg) and 3 x 8 person fire lifts
- BREEAM 'Very Good'
- Premium quality end of trip facilities



FOR MORE INFORMATION
PLEASE CONTACT:

CBRE

CHRIS VYDRA

020 7182 3143
chris.vydra@cbre.com

JACK KNIVETT

020 7182 3615
jack.knivett@cbre.com

DAVID WILSON

020 7182 8160
david.t.wilson@cbre.com

IMPORTANT NOTICE RELATING TO THE MISREPRESENTATION ACT 1967 AND THE PROPERTY MISDESCRIPTIONS ACT 1991 CBRE on behalf and for the lessors of this property whose agents they are, give notice that: The particulars are set out as a general outline only for guidance of intending lessees and do not constitute, nor constitute part of, an offer or contract. September 2020. SUBJECT TO CONTRACT.